

The logo for FabricAir, featuring the brand name in a bold, white, sans-serif font on a blue rectangular background. The background has a white corner effect on the right side. The logo is set against a background of a blue-tinted industrial interior with a complex network of pipes and structural beams.

FabricAir

FabricAir Suspension Systems

2013

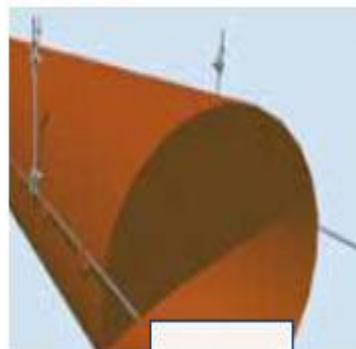
Suspension

TYPES

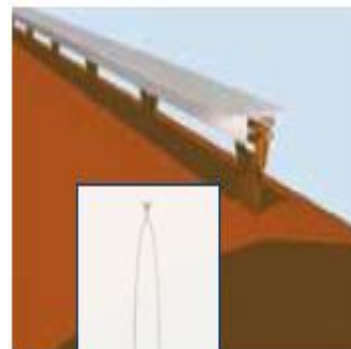
Type 1
Single Cable



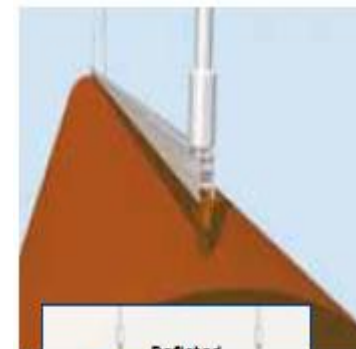
Type 2
Double Cable



Type 3
Single T Rail



Type 5
Single H Rail

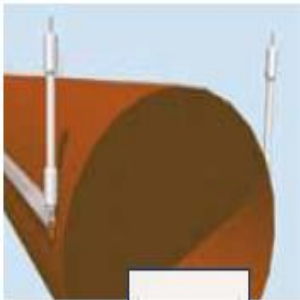


2013

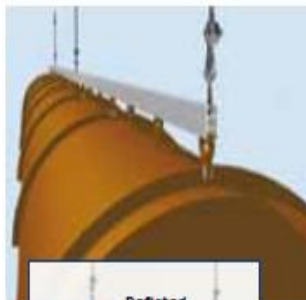
Suspension

TYPES

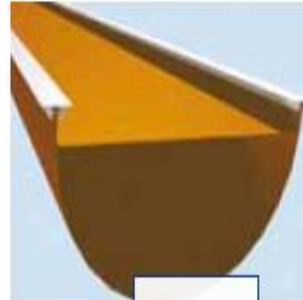
Type 6
Double H Rail



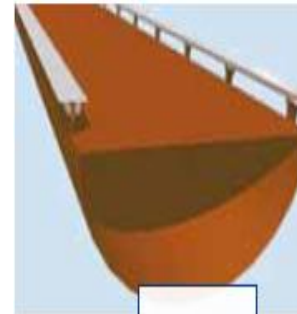
Type 8
Single H Rail



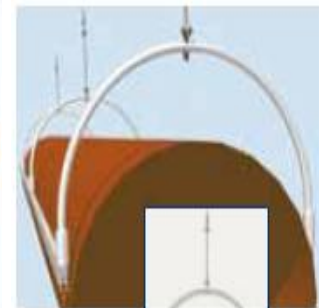
Type 11
D Shaped T Rail



Type 12
D Shaped T Rail



Type 13
Double H Railed



2013

Suspension

TYPES



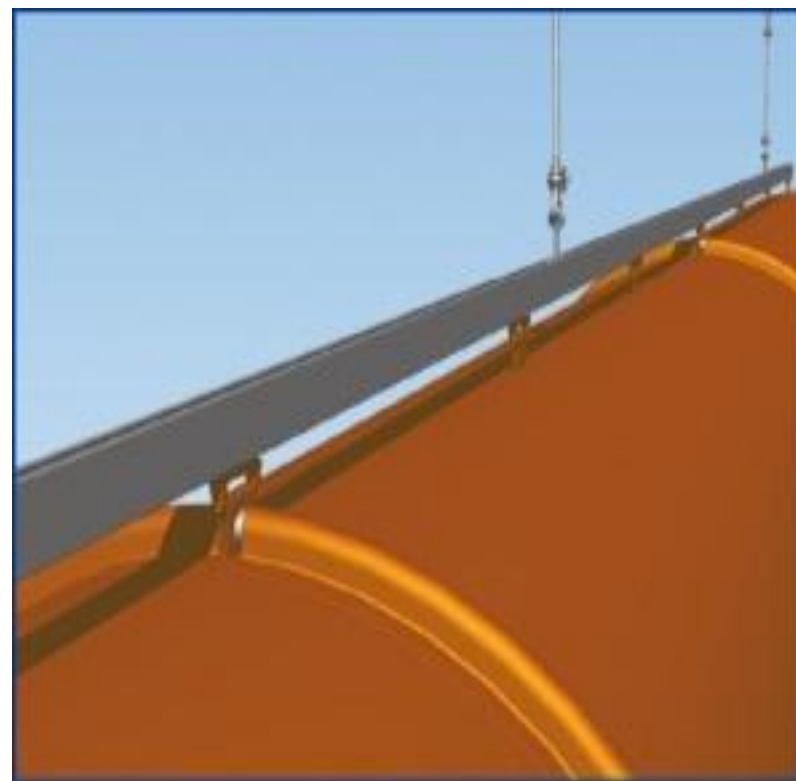
All In One



Deflated



Inflated



2013

Suspension

TYPES



All In One

A fully suspended duct with just one ceiling drop thanks to All-in-One.

Rails curve nicely in elbows.

Rails connect easily